



USAID
FROM THE AMERICAN PEOPLE



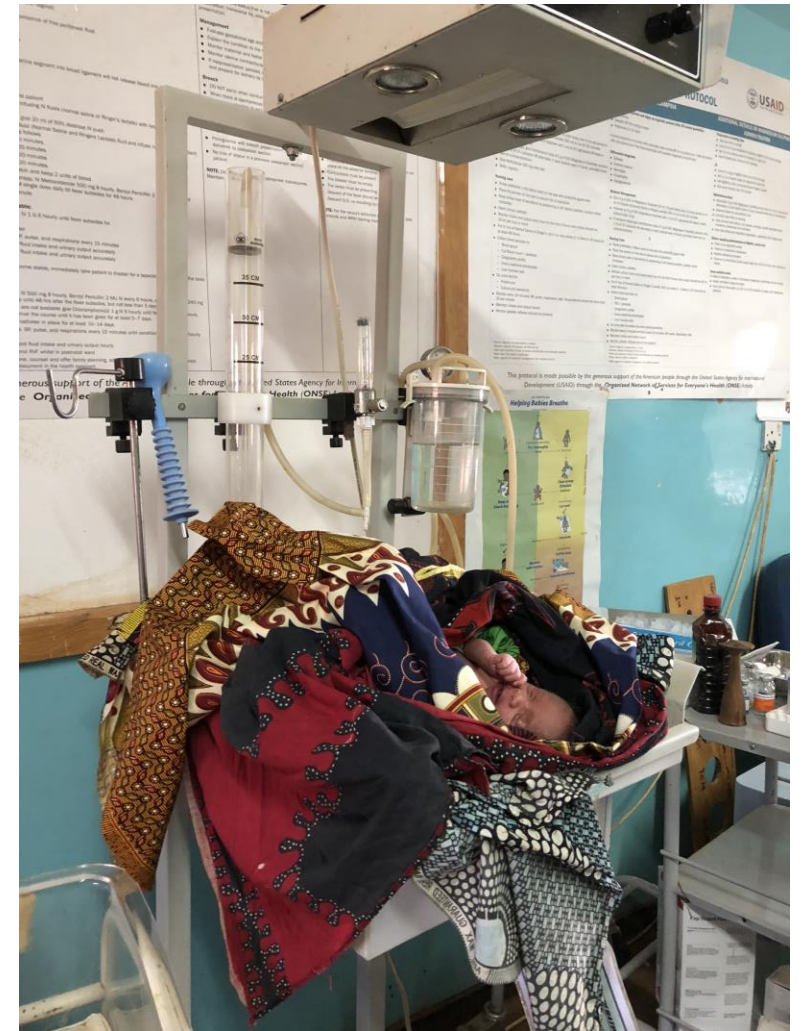
USAID'S HEALTH EVALUATION AND APPLIED RESEARCH DEVELOPMENT (HEARD) PROJECT

Advancing Post-Partum Hemorrhage Care (APPHC) in Malawi and Madagascar through Implementation Science

Emily Peca, DrPH, MA
Implementation Research Scientist
University Research Co., LLC

Presentation Outline

1. Background and Overview of APPHC
2. Our Approach
3. Progress to Date
4. Next Steps
5. Feedback



Advancing Post-Partum Hemorrhage (APPHC)

1. Background

- USAID aims to accelerate improvement in Post-Partum Hemorrhage (PPH) prevention and care
- Interest in taking an **implementation science approach linking two existing programs**
- **Advancing Post-Partum Hemorrhage Care (APPHC)** is led by two global implementation science projects from URC & Population Council.*

What is Implementation Science?

The use of scientific methods to study the implementation (what, why, and how interventions work) of evidence-based practices and policies within their real life settings.**

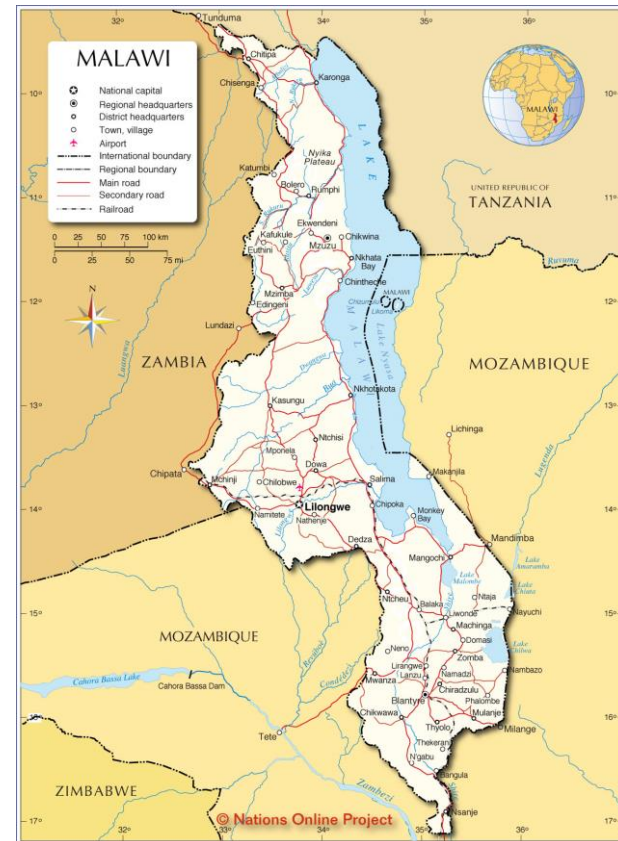
* URC: Health Evaluation and Applied Research Development (HEARD) Project; Population Council: Breakthrough RESEARCH Project

**Sources <https://www.gacd.org/research/implementation-science>, <https://www.researchconnections.org/files/childcare/pdf/FranksPresentation.pdf>

Countries of Focus



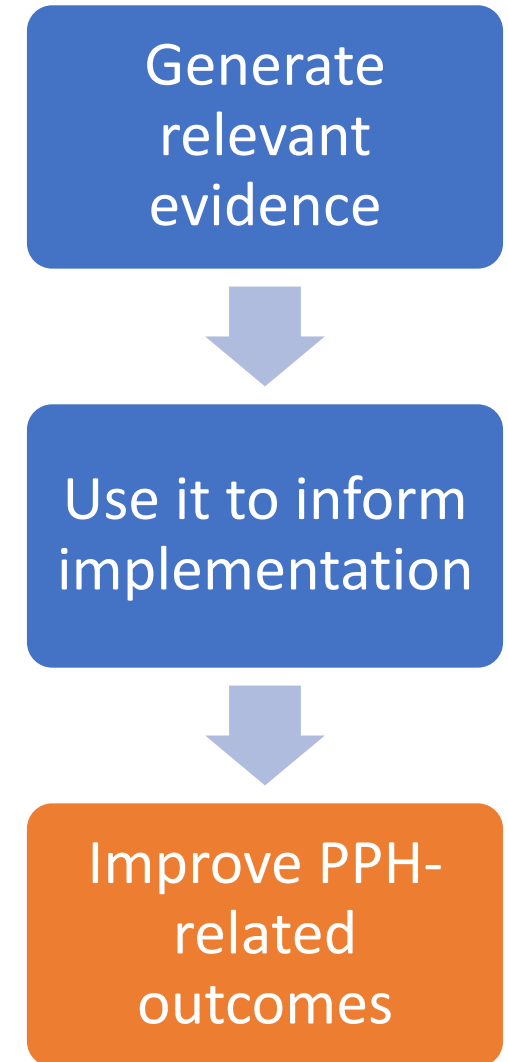
Madagascar



Malawi

Objectives of Advancing Postpartum Hemorrhage Care (APPHC)

- Generate and test solutions to address key implementation barriers for PPH
- Advance effective implementation learning for PPH interventions, strategies, and innovations



Desired Outcomes of APPHC Investment

- **Strengthened evidence** base for effective social behavior change research and implementation approaches including provider behavior change to prevent and treat PPH.
- **Active Implementation Science Learning Network** to engage key stakeholders

How do we achieve our objectives?

1. Ask **better questions**: understand the priorities in Madagascar and Malawi;
2. Form **better partnerships**: link to policymakers, implementers, researchers to understand current evidence needs;
3. Generate **relevant evidence** for implementation and decision-making.

This will lead to more evidence translated into use for policy and program improvements.





1. Better questions: Leveraging the PPH Framework

	Woman-Centered Care for PPH	Essential PPH Commodities	Functional Referral System	PPH Metrics and Actionable Information	Human Resources	Financing	Policy and Governance	Service Delivery Best Practices and Quality Improvement	Community Education/Outreach	Infrastructure
National Policymakers and Managers										
Subnational Managers										
Facility Managers & Service Providers										
Community Stakeholders and Health Workers										

*MCSP Framework

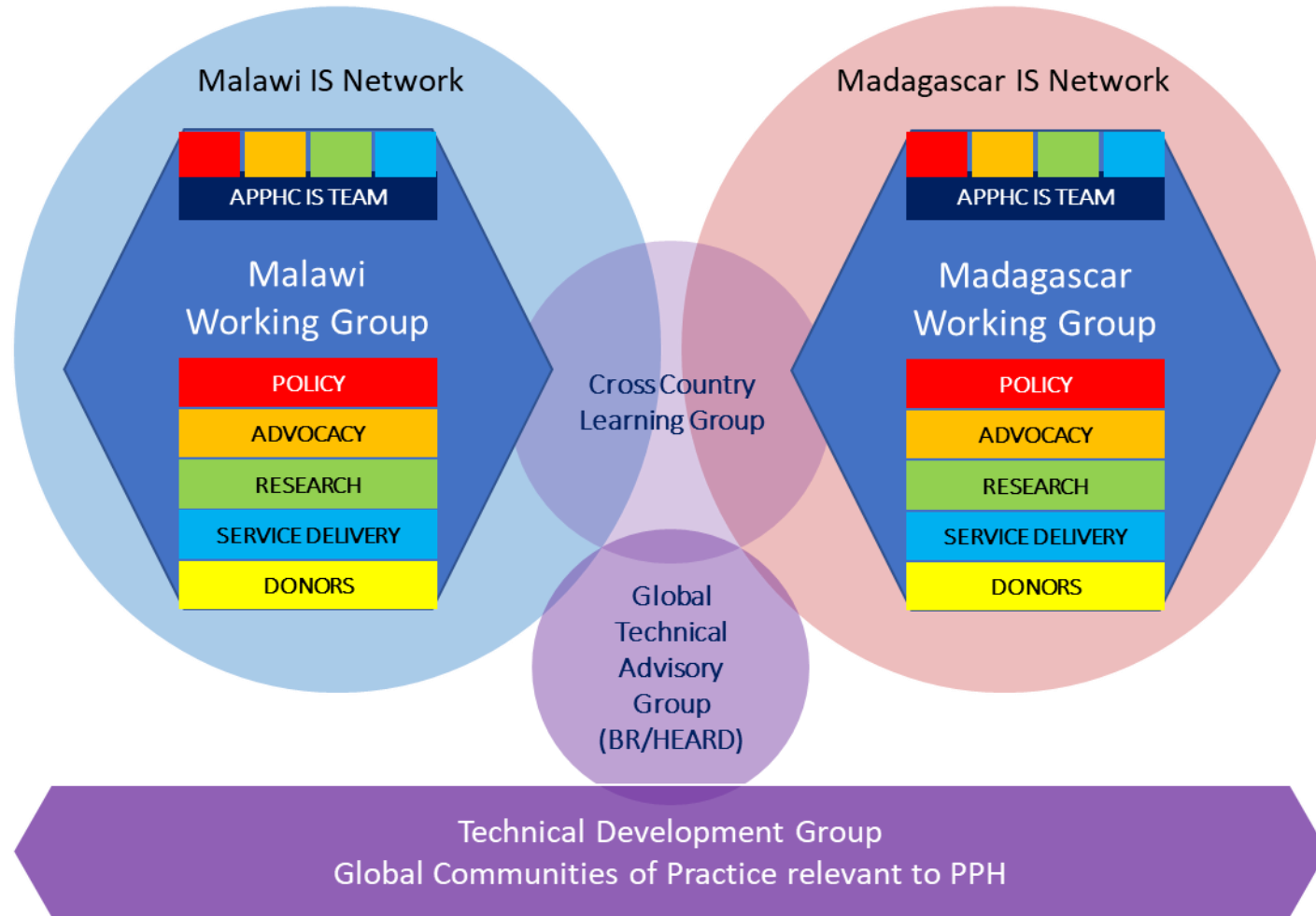


2. Better Partnerships: Sub-Regional and Global Learning

- Country Working Group
- Cross-Country Learning Platform
 - Between Malawi and Madagascar and in the sub-Region supported by ECSA-HC
- Global Technical Advisory Group
 - Will provide expert technical inputs to the APPHC Activity and contribute to synthesis of findings and uptake in global communities of practice
- Linkages to Global Communities of Practice
 - MCSP-hosted PPH CoP
 - Global learning agenda on Provider Behavior Change



3. Relevant evidence generated locally with APPHC Country, Sub-Regional, and Global Collaborations



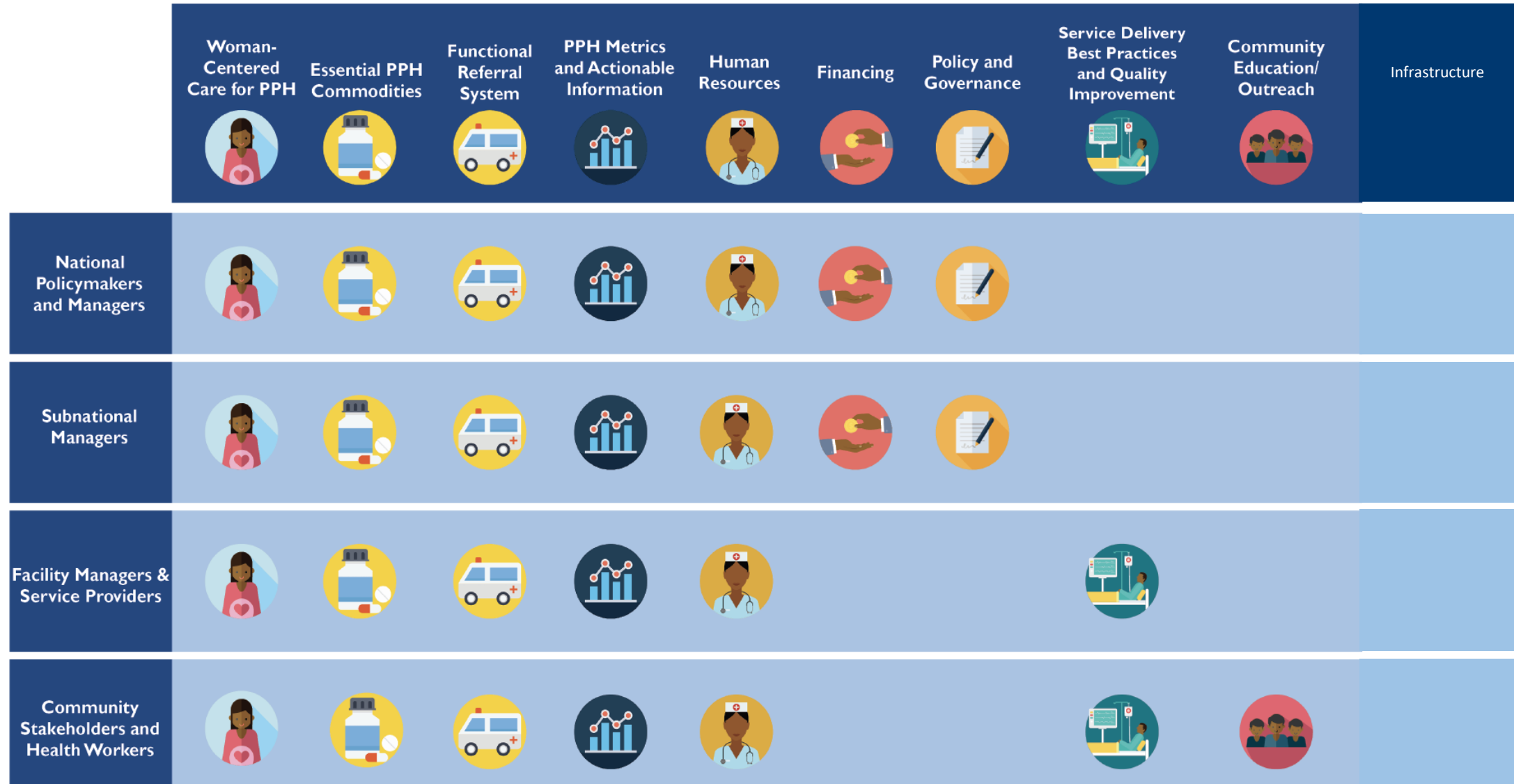
4. Progress to Date



Milestones Achieved



PPH Framework: for scoping & agenda setting

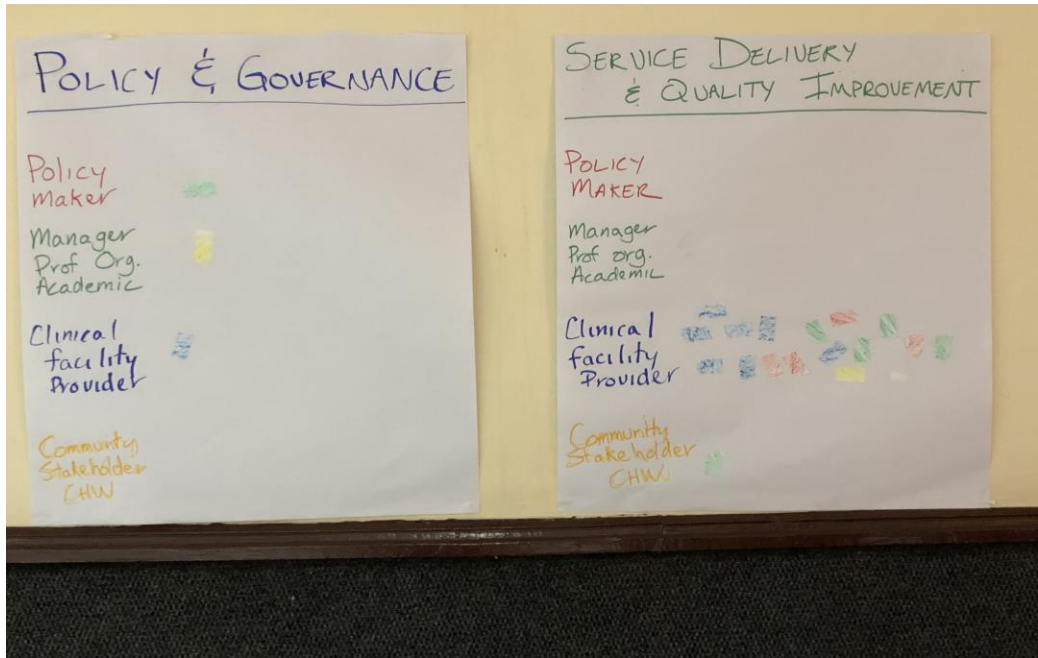


*MCSP Framework

“Magic Wand” Exercise

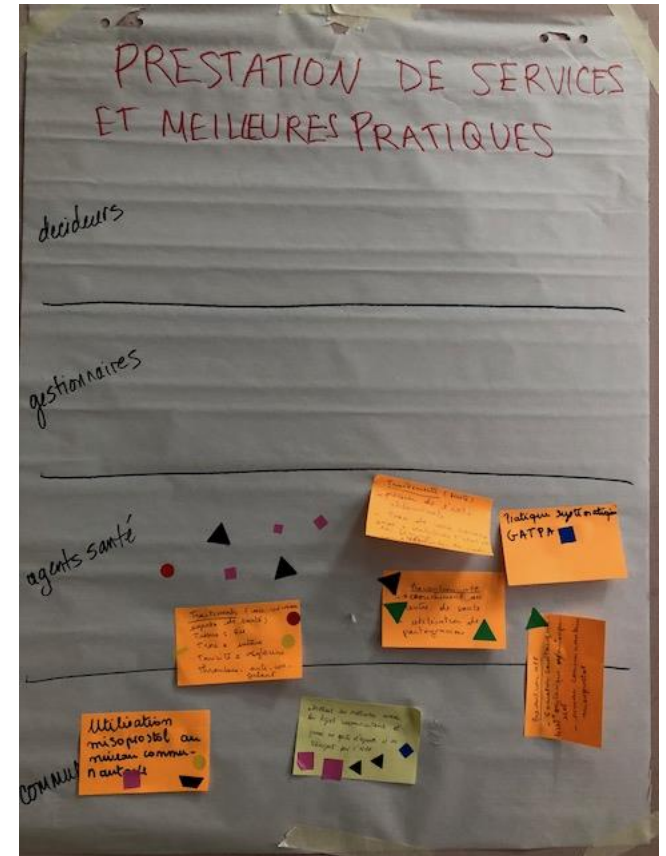


Stakeholder Meeting Process



Emerging Opportunities and Evidence Gaps

1. Determinants of provider behavior and performance
2. Models and approaches related to service delivery
3. Analysis of existing data to improve systems
4. Develop (Case) studies around innovation adaptation and implementation



Brief Discussion

- What are the broad themes/topics that are most relevant in other ECOSA-HC member states?
- Are there related activities ongoing in other ECOSA-HC member states?
- Are there examples of success? What are examples of successful program/intervention implementation from which we can learn?